

- 4、 Never cover the heater as this may lead to risk of fire.
- 5、 Keep the heater a distance of at least 90cm from any combustible material, such as furniture, curtains, bedding clothes or papers.
- 6、 Keep the heater clean. Do not allow objects to enter the ventilation, as this may cause electric shock, fire or damage the heater.
- 7、 Close supervision is required when any appliance is used near or by children.
- 8、 Never allow the cord to touch wet or hot surfaces, become twisted or be within the reach of children.
- 9、 Do not use outdoors.
- 10、 Do not place on or near a hot gas or electric burner.
- 11、 Never use the appliance with a damaged cord or plug or after the appliance has malfunctioned or been damaged in any way.
- 12、 Never attempt to open any part or dismantle the controls. Responsibility for failure cannot be accepted if these instructions have been ignored.
- 13、 Do not use the appliance for anything other than its intended use.
- 14、 This appliance is intended for household use only.
- 15、 Regulations concerning the disposal of the oil when scrapping the appliance have to be followed.
- 16、 Any repairs that need to be done to the heater must be referred to an authorized service agent only.
- 17、 The appliance is not intended for use by young children or infirm persons without supervision.
- 18、 Young children should be supervised to ensure that they do not play with the appliance.
- 19、 If the supply cord is damaged, it must be replaced by the manufacturer or its service agent in order to avoid a hazard.
- 20、 The heater must not be located immediately below a socket-outlet.
- 21、 Do not use this heater in the immediate surroundings of a bath, a shower or a swimming pool.
- 22、 This heater is filled with a precise quantity of special oil. Repairs requiring opening of the oil container are only to be made by the manufacturer or his service agent who should be contacted if there is an oil leakage. Regulations concerning the disposal of the oil when scrapping the appliance has to be followed.

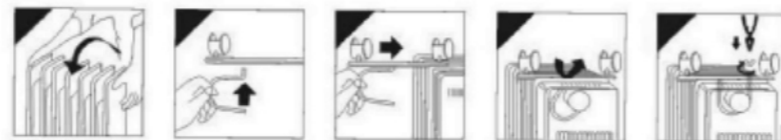
INTRODUCTION

Thank you for purchasing our Oil-filled Heater. Each unit has been manufactured to ensure safety and reliability. Before first use. Please read the instructions carefully and keep them for further reference.

ASSEMBLY

Remove the heater and all the accessories from the carton.

- 1、 Turn the heater upside down.
- 2、 Position the wheel base assemblies between the end fins.
- 3、 Attach them to the heater using the U-bolts and wing nuts supplied.
- 4、 Tighten the wing nuts.
- 5、 Turn the heater the right way up.



PARTS DESCRIPTION

1. Power setting switch
2. Thermostat control
3. Handle
4. Oil filled fins
5. Castors
6. Cord storage
7. Timer



OPERATING YOUR OIL-FILLED HEATER

Place the heater on the floor at least 90cm away from the wall and any other objects such as furniture, Curtains or plants.

(Make sure the power supply used corresponds to the one on the rating label)

With the thermostat control switch in the "O" position and the power setting switches in the "OFF" Position; plug the heater into the main power supply.

OPERATION

- 1、 Room temperature can be adjusted using the thermostat. Simply turn the thermostat knob clockwise, to increase the heat, and anti-clockwise to decrease the temperature, until you reach the desired temperature.
- 2、 Switch the heater to one of the following power settings.
 - A)07fins: Push switch one (I) for 600W
Push switch two (II) for 900W
Push switch one&two (I&II) for 1500W.
 - B)09fins: Push switch one (I) for 800W
Push switch two (II) for 1200W
Push switch one&two (I&II) for 2000W.
- 3、 The power switch lights up when activated.
- 4、 Turning the thermostat control clockwise will increase the "set" temperature.
- 5、 Turning the thermostat anti-clockwise will decrease the "set" temperature.
- 6、 Do not cover the heater at any time during operation. There is a risk of fire if the heater is covered.
- 7、 Once you have finished using your heater,turn the power switches off, and the thermostat control switch to the "O"positions, and unplug from the mains supply.



ULTRA MAX®

PRODUCT USE, CARE AND SERVICE

WARRANTY INSTRUCTIONS

MODEL: HTRUMXOR02

READ AND SAVE THESE INSTRUCTIONS

DO NOT TURN RADIATORS UPSIDE-DOWN DURING OPERATION

CLEANING YOUR OIL-FILLED HEATER

- 1、 Always disconnect the heater from the mains supply before cleaning.
- 2、 Clean the outside of the heater by wiping with a damp cloth and buff with a dry cloth.
- 3、 DO NOT use waxes or polishes as these may react with the heater and cause discoloration.

STORING YOUR OIL-FILLED HEATER

- 1、 Save the box for off season storage.
- 2、 Clean the heater following the cleaning instructions above.
- 3、 Remove the wheel base assemblies.
- 4、 Place the heater, and wheel assemblies in the original box, and store in a cool and dry place.
- 5、 If you choose to store your heater fully assembled be sure to cover it to protect it from dust.

IMPORTANT SAFEGUARDS

- 1、 Read the instructions carefully before use and save them for future reference.
- 2、 Always disconnect the heater from the main supply when not in use and when cleaning.
- 3、 Do not leave the heater "ON" unattended.