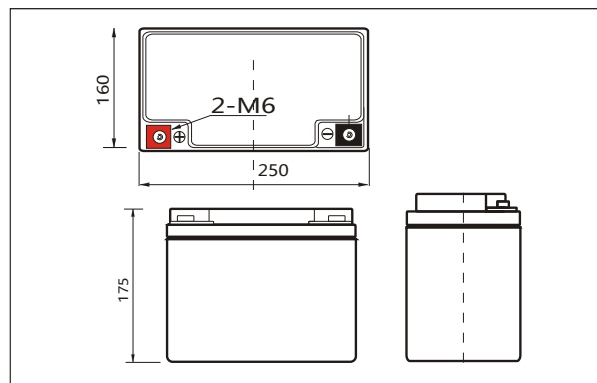


Lithium Iron Phosphate (LiFePO4) Battery Specification

SLAUMXLI60-12(12.8V60AH)



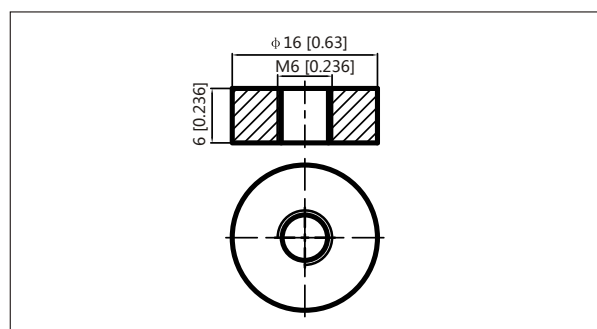
Outer dimensions (mm)



Specifications

Nominal Voltage		12.8V
Rated capacity (20 hour rate)		60Ah
Dimensions	Total Height	175 mm
	Height	175 mm
	Length	250 mm
	Width	160 mm
Weight Approx		7.2 Kg
Terminal		M6

Terminal Type (mm)



Characteristics

Capacity Retention		>80% at 28 days
Cycle Life		>80% at 2000 Cycles
1.5 hour discharge to 10.5V		3.00 A
Internal Resistance		<50 mΩ
Charge Characteristics	Charge Voltage	14.6±0.1V
	Charger Current	<50A
Discharge Characteristics	Max Continuous Current	60A
	Min Discharge Cut-off Voltage	10V
Temperature	Charge Temperature	0°C-45°C(32°F-113°F)
	Discharge Temperature	-20°C-60°C(-4°F-140°F)
	Storage Temperature	0°C-40°C(32°F-104°F)

Discharge Curves 25°C(77 °F)

